



Promoting GIS in British Schools

- Steve Brace
- Head of Education & Outdoor Learning. Royal Geographical Society with IBG
- s.brace@rgs.org
- Many teachers want to use GIS but are unconfident



5 year development programme

- Getting started
- Embedding
- Local application
- Skills development – mentoring, diplomas & professional development
- Evaluation
- GIS beyond schools



Getting started with GIS in the classroom

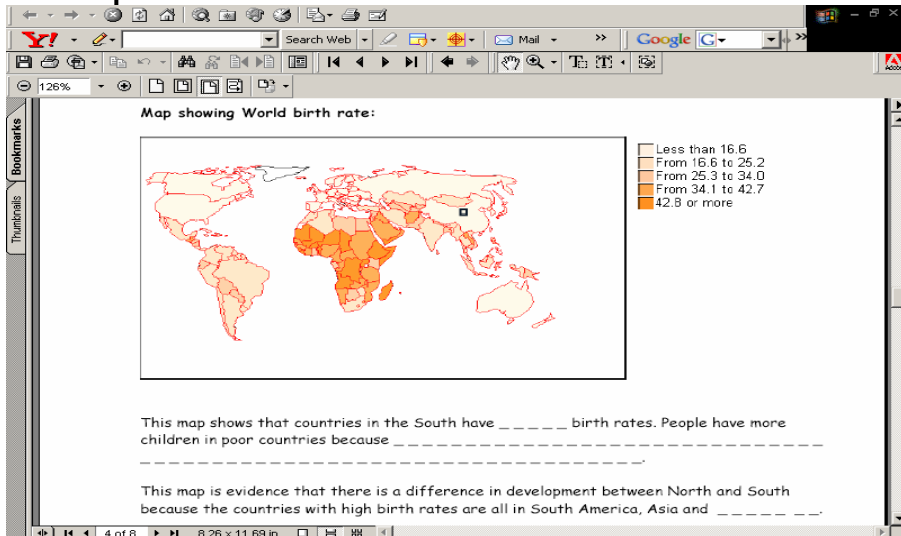
- Began in 2003, Dept for Education support
- Work with secondary schools 11–18, GIS, & key partnership with Ordnance Survey
- Online advice & support
 - Introduction to use of GIS, guides to products etc
 - 'Early adopter' case studies .g. GIS mapping of street crime & traffic congestion
- All resources via www.rgs.org/gis



Embedding GIS in schools

- Evaluation of software e.g. ESRI, AEGIS, Infomapper, Digital Worlds etc.
 - Summary functionality, application, cost, installation
- Frequently asked questions
- Commissioned case studies:
 - Rail development, use of fieldwork data on land-use & socio-economic data, international development divide

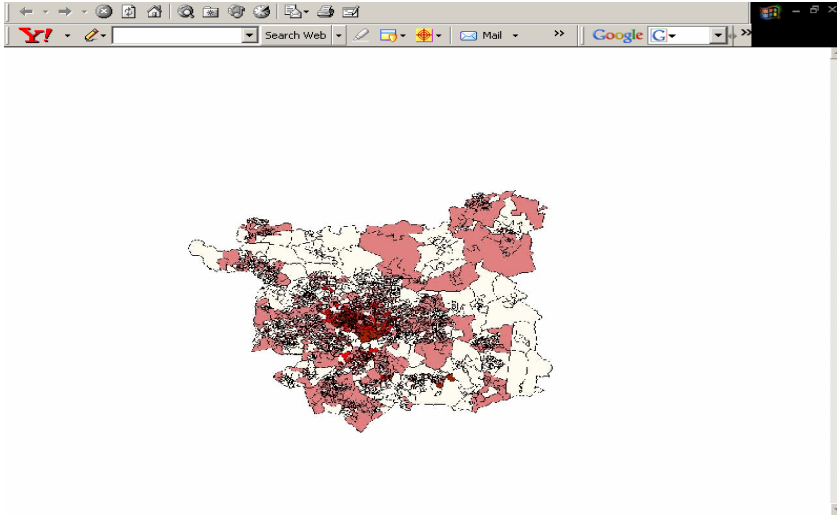
The development divide – using Aegis



Local learning

- Highlighting the primacy of the “locality”.
- Web resources using free OS & Census data
- Guide to incorporating data into GIS software
- 10 locations (Leeds, York, Bedford & Harlow) & themes e.g unemployment, urban structure & environmental quality
- Leeds migration study 2001 census & Arcview:
 - Different data sets e.g. international, UK & students.
 - Pupil enquiry into migration clusters.

GIS map of migration in Leeds



Skills Development

- Mentoring programme 10 schools through face to face activities.
- Professional development courses e.g. GIS day with Ordnance Survey
- New opportunities Google Earth
- GIS Diploma for teachers – piloting over the Autumn term with Birkbeck College University of London



Chartered Geographer (Teacher)/(GIS)

- Professional accreditation for “geographers” using their professional skills in the workplace.
- Can be applied to teachers & also GIS professional via partnership with the Association for Geographic Information
- www.rgs.org/ourwork/charteredgeographer



Evaluation “Map Pilot”

- Working with Ordnance Survey, Dept. for Education, Curriculum Authority & Technology authority (BECTA)
- Evaluating OS provision of free local data to all maintained schools via Local Authorities.
- Greater access, use & curriculum support

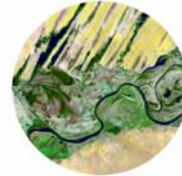


GIS beyond schools

- GIS for expeditions & fieldwork courses:
- Mapping Unit. H.E experts
- *GIS, GPS and Remote Sensing* Manual: from 'traditional' compass-based surveying, through to the use of GIS, GPS & satellite imagery.

Field Techniques:
GIS, GPS and
Remote Sensing

Royal
Geographical
Society



Expedition Advisory Centre