



# “Economic turbulence on Dutch Cadastre”

*and tackling the consequences*



Mr. Godfried Barnasconi  
Member Executive Board  
Southampton: July 13<sup>th</sup>, 2009

**kadaster**  
feitelijk verrassend

# Content

- Economic crisis in The Netherlands
- Effects on Kadaster
- How to handle them



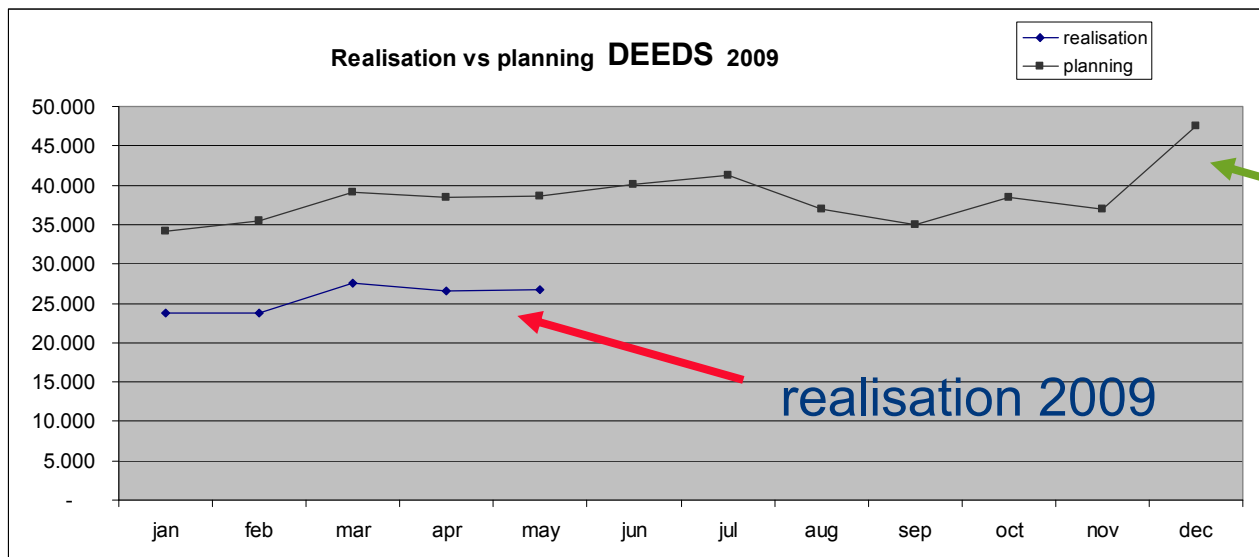
kadaster

# Economic crisis in The Netherlands

- April 2009: 4,6% of total labour force (in 2008: 4,2%)
- Real estate market: only 6 months of work in entire country = the lowest construction stock since November 1994  
Coming 2 years a loss of 50.000 jobs in construction industry is expected
- Dun & Bradstreet: increasing bankruptcy:
  - 2008 : 4200 companies
  - 1<sup>st</sup> half 2009 : 4150 ,, (finance, real estate, construction)
- Real estate market: # of private house sales in 2009 = 30-35% less

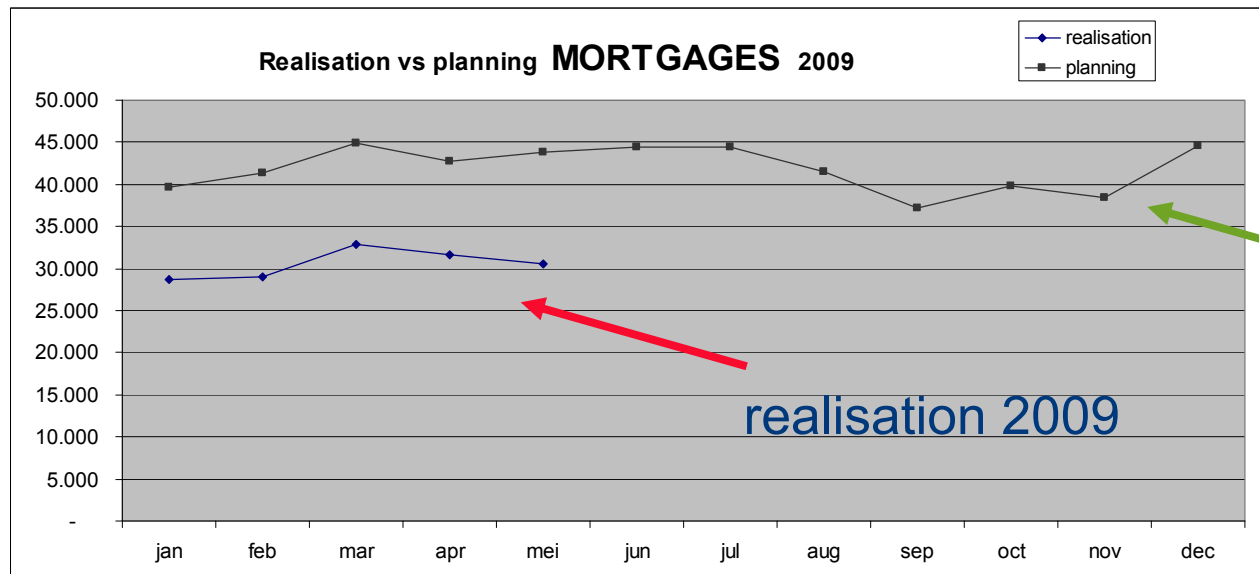


# Effects Input: trend # of deeds / mortgage documents



planning  
2009

realisation 2009



planning  
2009

realisation 2009

# Profit and Loss Account ytd May 2009

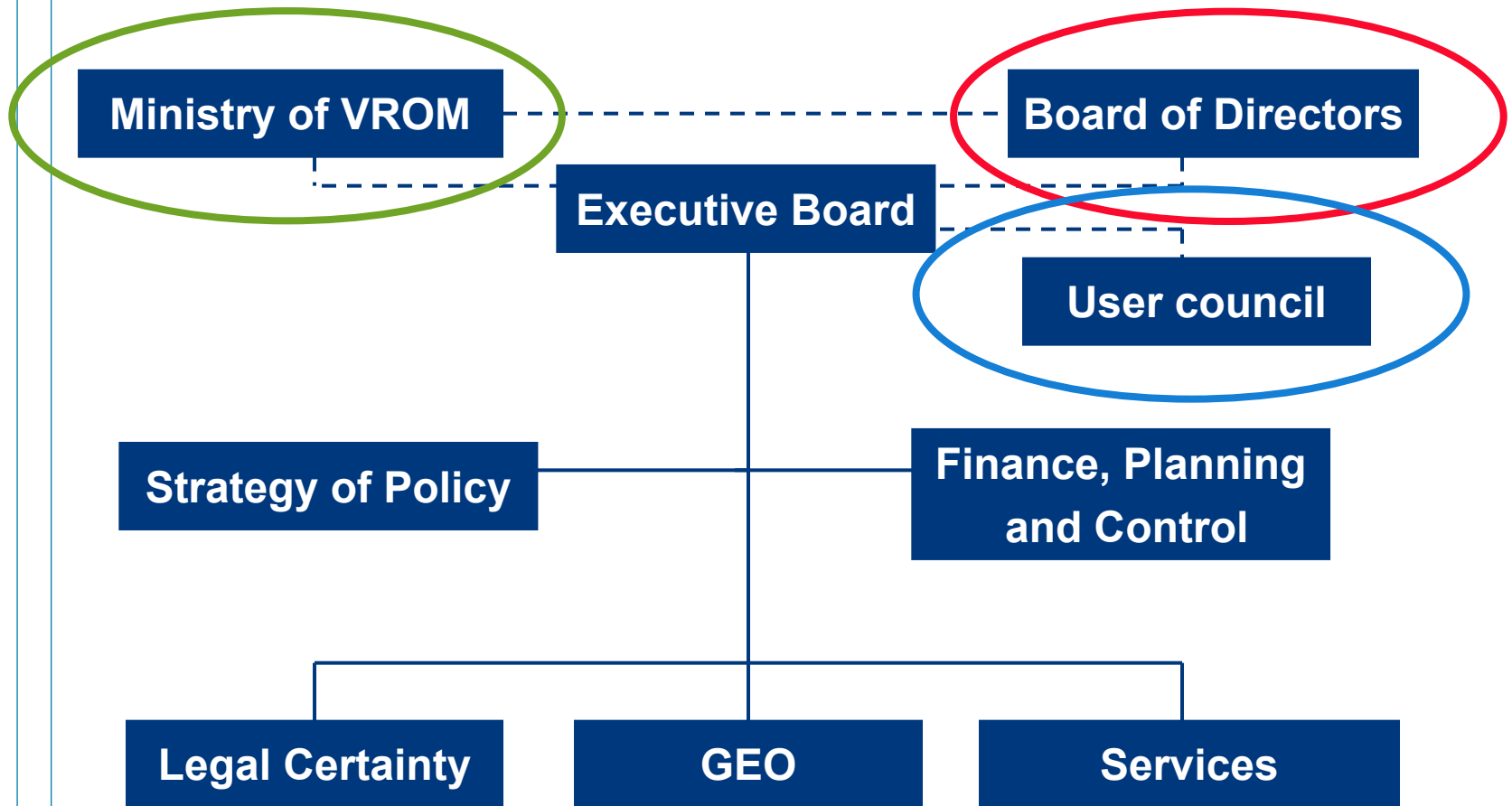
	<u>Realisation</u> ytd May	<u>Planning</u> ytd May
■ Total operating income	: € 90,5 million	€ 111,3 million
■ Total operating expenditure:	<u>€ 100,6 million</u>	<u>€ 105,5 million</u>
■ Operating result	: € -/- 10,1 million	€ 5,8 million
■ Interest expenses	: <u>€ -/- 0,7 million</u>	<u>€ -/- 0,4 million</u>
■ Result	: € -/- 10,8 million	€ 5,4 million



# Financial policy and internal management

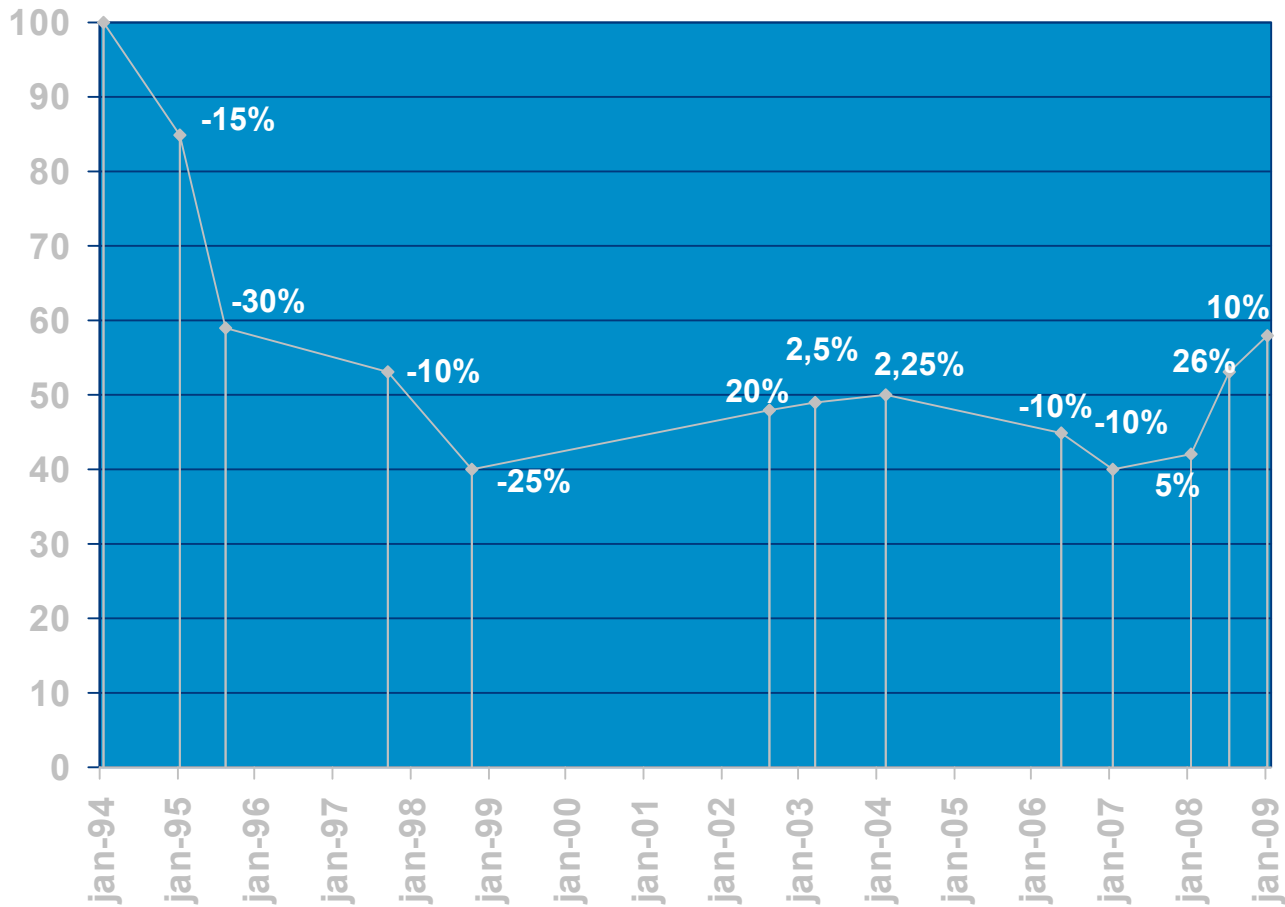
- Highly structured internal management cycle
- Driven by budgets, performance indicators and cost price
- Financial & business management information per month
- Turnover: not easy to influence (= external factors)
- Cost control-driven approach
- Cost flexibility is important, but difficult to realise
- ***Review of strategy***
- ***Discussion about higher tariffs with stakeholders***

# Kadaster organisation / stakeholders



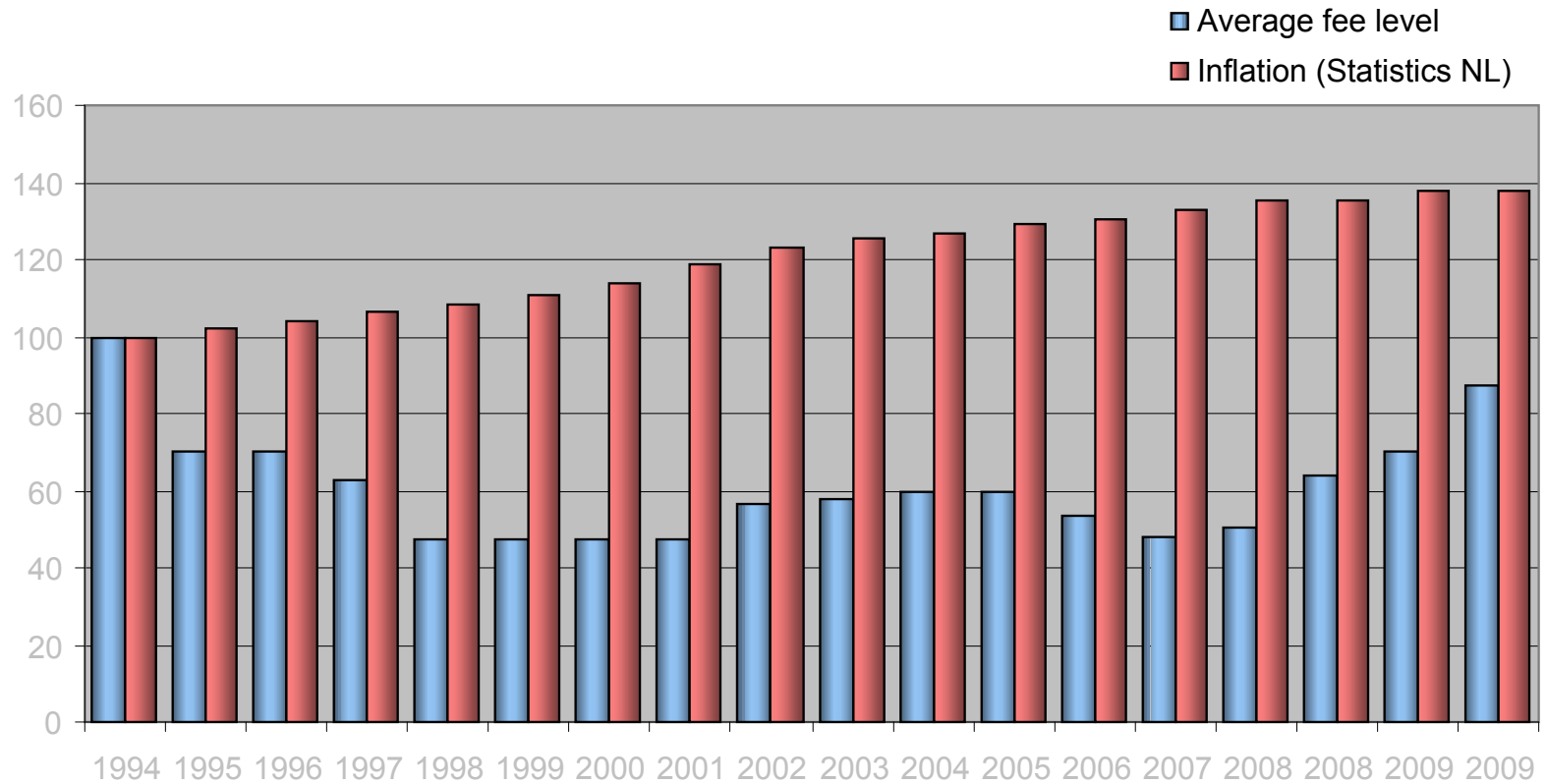
# Development of users' fees

1 August 2009: + 25%?

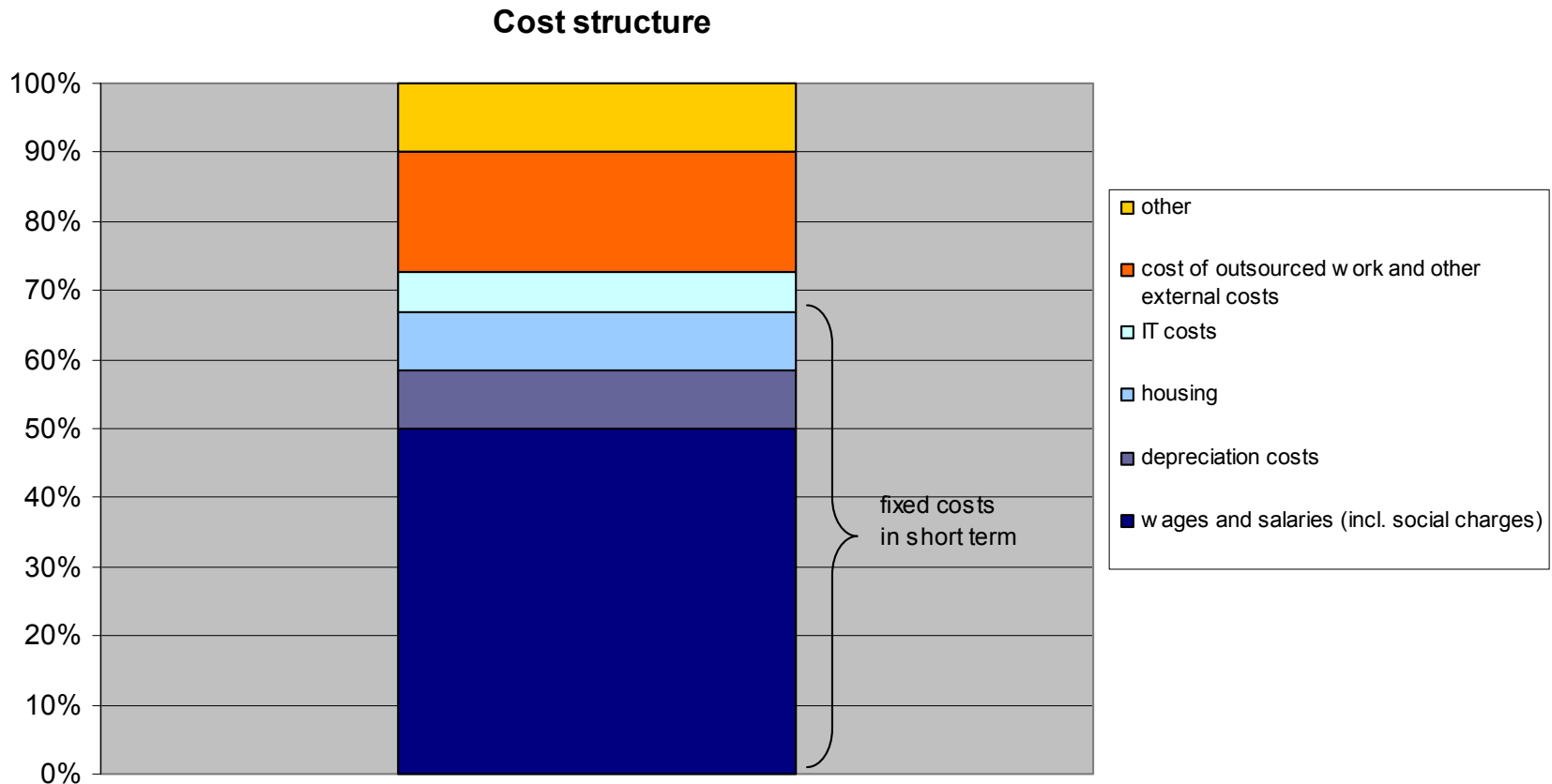


kadaster

# Development users' fees, inflation included



# Cost structure





# Cost flexibility

Less than 30% of Kadaster costs is flexible:

Reducing cost of outsourced work and other external costs has consequences:

- less quality
- objectives will not be achieved
- quality appointments to market / stakeholders under pressure

Only a few percent is flexible without consequences for business, image and promises

**Conclusion:** flexibility in current cost structure is very limited



# To use or support new technologies

- Contribute to location awareness: support location based services by promoting mapping
- Location awareness *will* grow (despite) of crisis
- Mapping (use) is not affected by crisis anyway
- Examples:
  - Nokia: in all new mobiles geo referencing will be available
  - transport: heavy use of navigation systems and mapping
  - infrastructure (geo referencing)



# Cooperation private industry

- Innovation new products
- Cooperation with market



# Conclusions

- Mapping is an useful assisting tool for:
  - visualising economic turbulence
  - analysing its details
  - supporting policy and operational decisions on it
- Mapping is already a booming market / navigation
- I dare to say: this economic crisis:
  - emphasizes the importance of mapping in solving it
  - stimulates a wider-spread mapping demand and sale

In the end: cooperation with market is really essential !